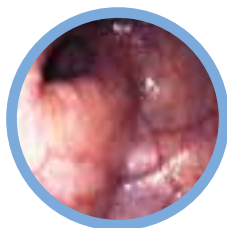


# Endoscopic findings

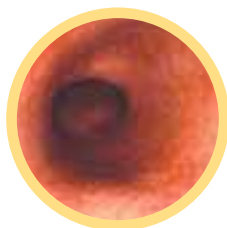
## Mayo UC Endoscopic Score = 0

(Normal or inactive disease)



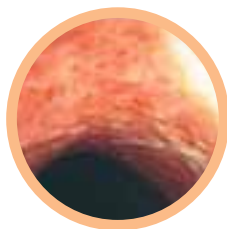
## Mayo UC Endoscopic Score = 1

(Mild disease: erythema, decreased vascular pattern, mild friability)



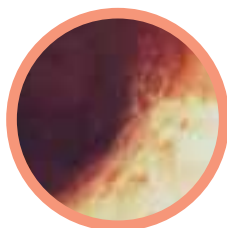
## Mayo UC Endoscopic Score = 2

(Moderate disease: marked erythema, absent vascular pattern, friability, erosions)



## Mayo UC Endoscopic Score = 3

(Severe disease: spontaneous bleeding, ulceration)



**Mayo scores were used in ACT I & II, the pivotal Remicade studies in ulcerative colitis.**

<sup>†</sup> Each patient serves as his or her own control to establish the degree of abnormality of the stool frequency.

<sup>‡</sup> The daily bleeding score represents the most severe bleeding of the day.

<sup>§</sup> The physician's global assessment acknowledges the 3 other criteria, as well as the patient's daily recall of abdominal discomfort, general sense of well-being, and other observations such as physical findings and the patient's performance status.

\* With no subscore >1.

### Reference:

1. Schroeder KW et al. *N Engl J Med* 1987; **317**: 1625-9.

Endoscopic pictures used with the permission of Dr Paul Rutgeerts, Academisch Ziekenhuis Gasthuisberg, Leuven, Belgium.